

Finch Wet Strength Device

Wet Tensile Fixture

The finch wet strength device is used to determine the wet tensile strength of a sample. This information is important for materials subjected to moisture and stress during processing or use. It is particularly useful for measuring paper and other materials which are easily damaged by handling when wet.

This device consists of an open ended horizontal bar which simplifies insertion of the sample and a vertically movable container that holds water or other liquid. The sample is wrapped around the bar and both ends are secured in the upper grip. The operator raises the container to moisten the sample, and then the test is started.

Applicable Standards:

ASTM D829, ISO 3781, ISO 12625-5, TAPPI T456

The finch wet strength device is constructed of stainless steel which provides excellent resistance to rust and corrosion. It can be used with any tester capable of holding a 16 mm x 1.6 mm tang.

Specifications:

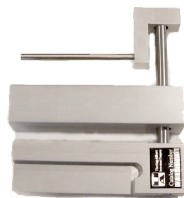
- Length 111 mm
- Capacity 50 N
- Two Options Available:

Maximum Sample Width 25.4 mm (1 in)
Part #731-0040

Maximum Sample Width 76.2 mm (3 in)
Part #731-3000



1" Model (731-0040)



3" Model (731-3000)



Thwing-Albert
Instrument Company



TA110623

thwingalbert.com