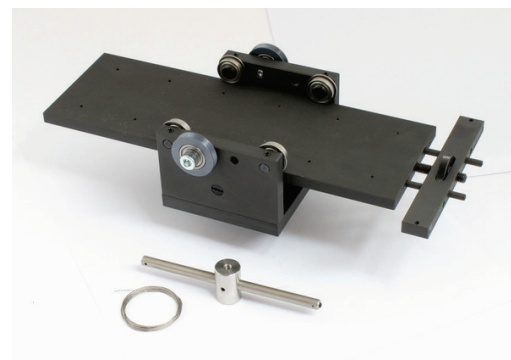
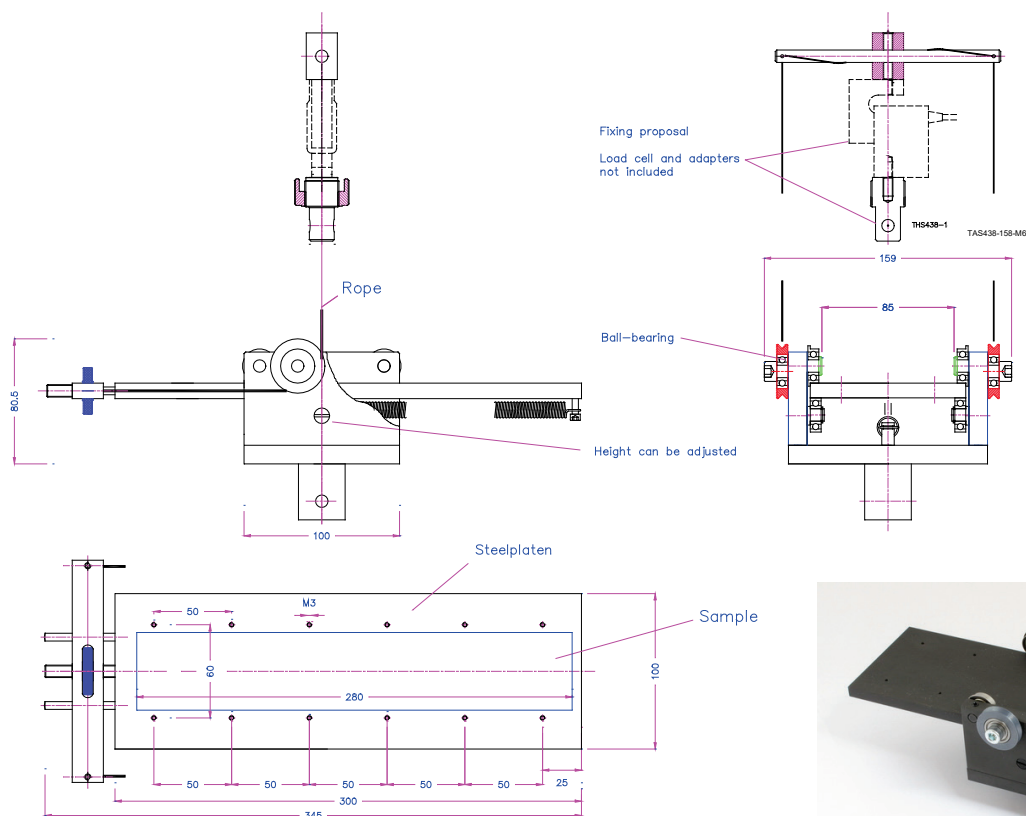
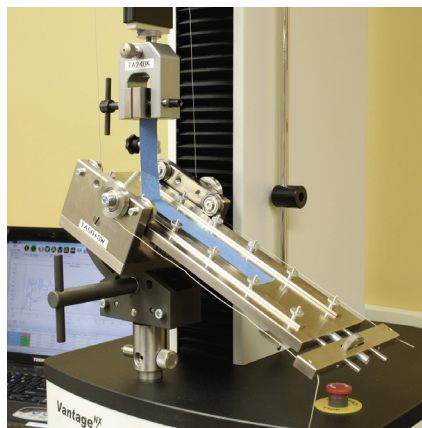


# Variable Angle Peel Fixture

TA50 – 5kN

Used to measure the bond strength.  
The sliding table provides a steady movement to maintain a constant angle peel (the peel point remains at the centre).

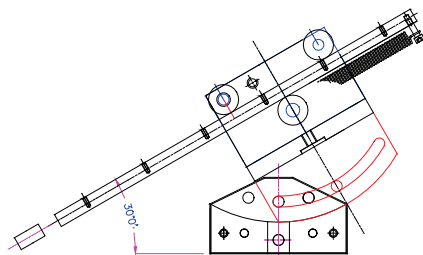
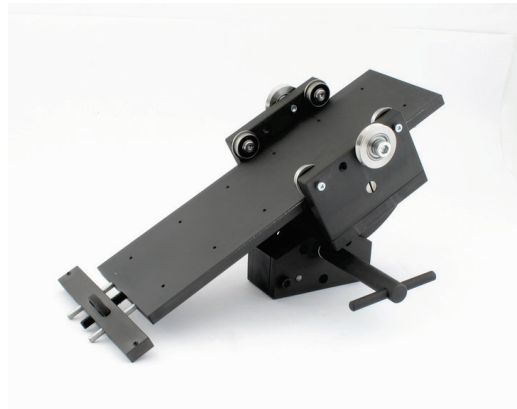
TA50	
Maximum load	5 kN
Specimen width	0 – 50 mm
Specimen length	0 – 250 mm
Body	Steel, manganese phosphate coated
Temperature range	0 – 70 °C Other temperature ranges on request
Weight	5.15 kg
Scope of delivery	1 fixture incl. mounting bar, wire and wire end tubes



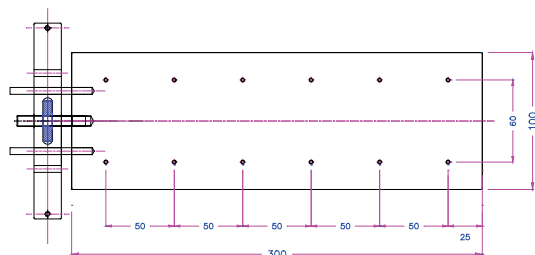
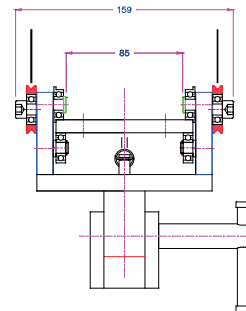
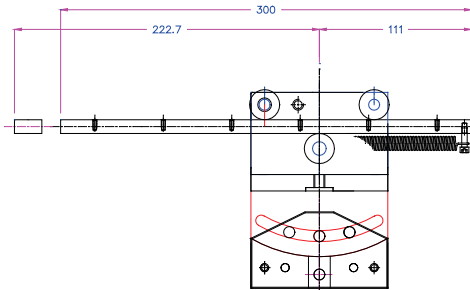
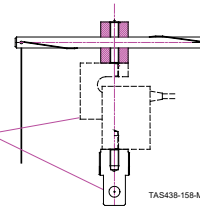
# Variable Angle Peel Fixture

TA50 – 5kN

TA50+SW1	0-30° variable adjustable angle
Maximum load	5 kN
Specimen width	0 – 50 mm
Specimen length	0 – 250 mm
Body	Steel, manganese phosphate coated
Temperature range	0 – 70 °C Other temperature ranges on request
Weight	7.1 kg
Scope of delivery	Fixture incl. mounting bar, wire and wire end tubes



Fixing proposal  
Load cell and adapters  
not included



TA50 +SW1



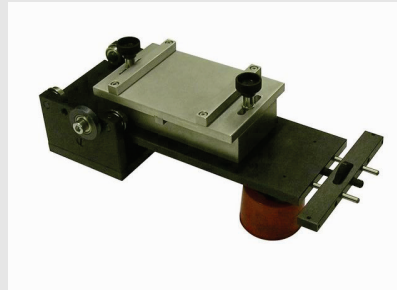
# Variable Angle Peel Fixture

TA50 – 5kN

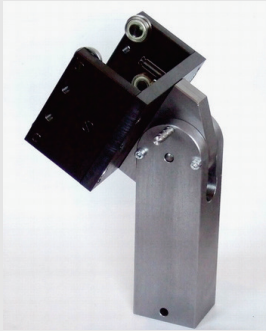
Examples of special versions:



TA50-B260-L300-SW



TA50+S31-laterally movable



TA50+SW2



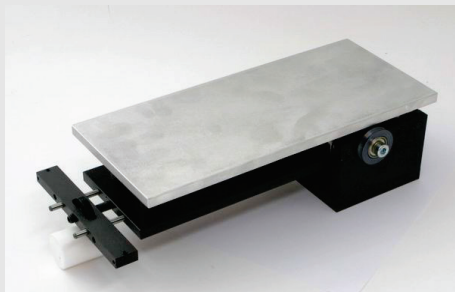
TA50-W130



TA50-S19



TA50-ground plate+TAS572



TA50-P2



**Thwing-Albert**  
Instrument Company



TA062322

[thwingalbert.com](http://thwingalbert.com)