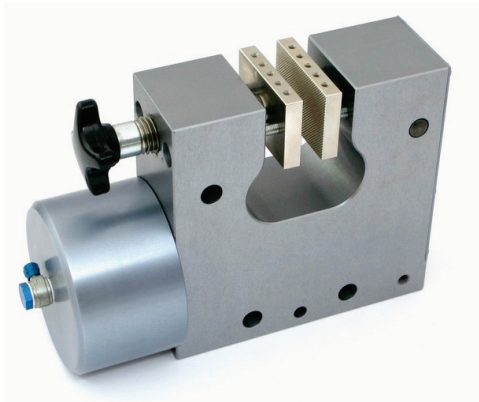


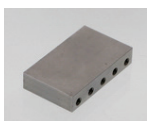
Pneumatic Grip

TA232

- Clamping force: 16 kN /7bar
- Standard temperature range: 0 °C - +70°C
with Viton: -70°C - +180°C
- Body made of aluminum
- Pneumatic connection: Internal thread 1/8"
- Weight ~4.5kg each without jaws
- Scope of delivery: 1 pair

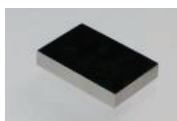


Jaws for TA232: Scope of delivery: 1 Set = 4 jaws



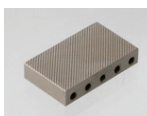
Blank (smooth) jaws

- Suitable for own further treatments
- Steel-blanks without coating



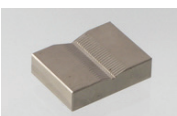
Rubber coated jaws

- 1 mm rubber coating (NBR)
- Nickel-plated



Pyramid jaws (serrated)

- Pyramids 1.2x45
- Hardened steel 58HRC
- Nickel-plated*



V-jaws

- For all kinds of round samples
- Tooth pitch 1.2 mm
- Hardened steel 58HRC
- Nickel-plated



Wave jaws (corrugated)

- For flexible materials
- Wave 5 mm
- Hardened steel 58HRC
- Nickel-plated



Diamond coated jaws

- Clamping surface coated with synthetic diamonds D91 (170/200 mesh)
- Nickel-plated

Item number	Surface	Clamping surface H x W	Opening	Temperature range	Weight/ 1 pair
TA232-B	Blank jaws	40 x 60mm	0 – 10 mm*	+20 °C - +180°C	0.35 kg
TA232-BG	Rubber coated jaws	40 x 60mm	0 – 10 mm*	- 70 °C - +70°C	0.36 kg
TA232-BP	Pyramid jaws	40 x 60mm	0 – 10 mm*	- 70 °C - +180°C	0.33 kg
TA232-BV	V-jaws	clamping height 40mm	4 – 12 mm Ø**	- 70 °C - +180°C	0.32 kg
TA232-BW	Wave jaws	40 x 60mm	0 – 10 mm*	- 70 °C - +180°C	0.40 kg
TA232-BD	Diamond coated jaws	40 x 60mm	0 – 10 mm*	- 70 °C - +180°C	0.35 kg
TA232-B100	Blank jaws	40 x 100 mm	0 – 10 mm*	+20 °C - +180°C	0.72 kg
TA232-BG100	Rubber coated jaws	40 x 100 mm	0 – 10 mm*	- 70 °C - +70°C	0.74 kg
TA232-BP100	Pyramid jaws	40 x 100 mm	0 – 10 mm*	- 70 °C - +180°C	0.69 kg
TA232-BW100	Wave jaws	40 x 100 mm	0 – 10 mm*	- 70 °C - +180°C	0.66 kg
TA232-BD100	Diamond coated jaws	40 x 100 mm	0 – 10 mm*	- 70 °C - +180°C	0.72 kg
TA232-BW200	Wave jaws	60 x 200 mm	0 – 10 mm*	0 °C - +180°C	3.00 kg

* On request: opening 10mm – 20mm and 20mm – 30mm

** On request: for round samples 8-30mm Ø



Thwing-Albert
Instrument Company



TA062322

thwingalbert.com

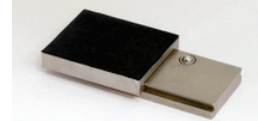
Pneumatic Grip

TA232

Inset jaws for TA232:

Jaw quick changing system; Inset jaws require carriers (TA232-GT)

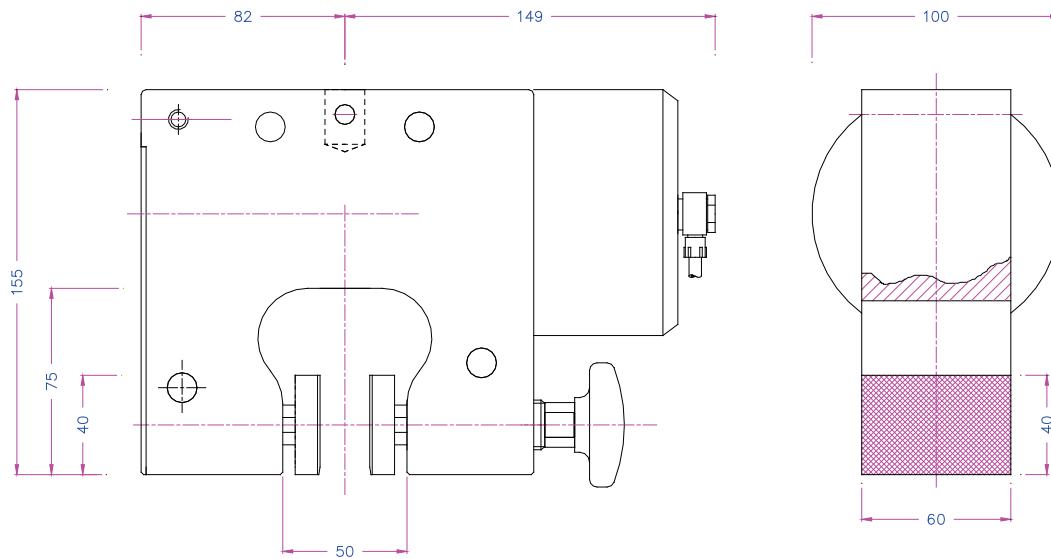
Scope of delivery: 1 Set = 4 jaws



Item number	Surface	Clamping surface H x W	Opening*	Temperature range	Weight/ 1 pair
TA232-GT	Carrier	-	-	- 70 °C - +180°C	0.33 kg
TA232-EB	Blank inset jaws	50 x 60mm	0-9mm	+20 °C - +180°C	0.29 kg
TA232-EBG	Rubber coated inset jaws	50 x 60mm	0-9mm	- 70 °C - +70°C	0.30 kg
TA232-EBP	Pyramid inset jaws	50 x 60mm	0-9mm	- 70 °C - +180°C	0.28 kg
TA232-EBW	Wave inset jaws	50 x 60mm	0-9mm	- 70 °C - +180°C	0.26 kg
TA232-EBD	Diamond coated inset jaws	50 x 60mm	0-9mm	- 70 °C - +180°C	0.29 kg
TA232-GT100	Carrier	-	-	- 70 °C - +180°C	0.69 kg
TA232-EB100	Blank inset jaws	50 x 100mm	0-9mm	+20 °C - +180°C	0.63 kg
TA232-EBG100	Rubber coated inset jaws	50 x 100mm	0-9mm	- 70 °C - +70°C	0.65 kg
TA232-EBP100	Pyramid inset jaws	50 x 100mm	0-9mm	- 70 °C - +180°C	0.60 kg
TA232-EBW100	Wave inset jaws	50 x 100mm	0-9mm	- 70 °C - +180°C	0.57 kg
TA232-EBD100	Diamond coated inset jaws	50 x 100mm	0-9mm	- 70 °C - +180°C	0.63 kg

* On request: opening 9–19mm

Jaws with other dimensions and surface coatings on request



Thwing-Albert
Instrument Company



TA062322

thwingalbert.com