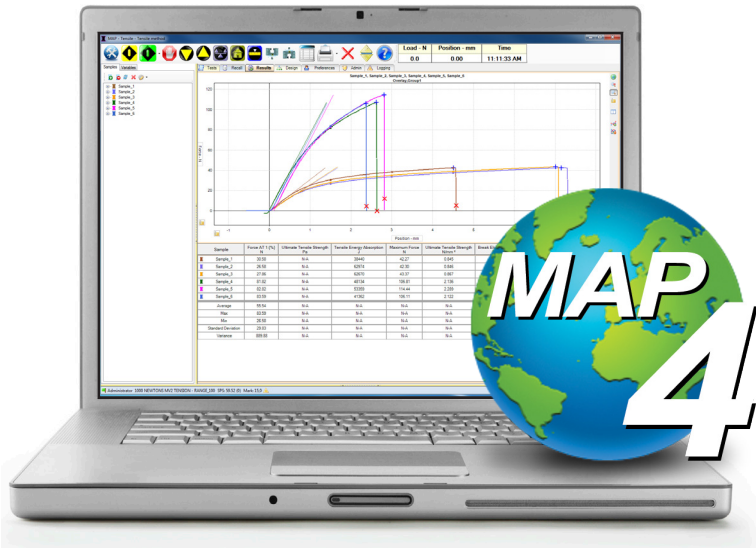


# MAP4 Materials Testing Software

Motion, Analysis, Presentation



MAP4 Powers Vantage Series Tensile Testers



- ✓ View Real-time Graphical Test Results
- ✓ User Customizable Test Methods
- ✓ Create Custom Presentation Templates
- ✓ Share Video and Sound Training
- ✓ Control Your Test Result Display
- ✓ Simplify Analysis by Tracking Variables
- ✓ Group Statistics for Powerful Analysis
- ✓ Easy Unit Conversion Built-In
- ✓ Multi-Lingual System Capabilities



## Dynamic Motion Control, Detailed Analysis, Power to Present...

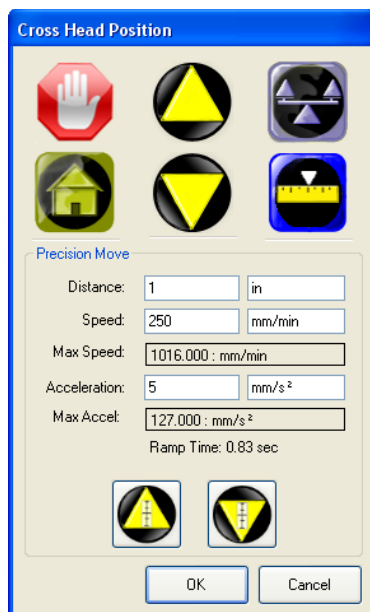
MAP4 is a comprehensive advanced materials testing software system used for many applications. No need for expensive add-on modules. This updated version of MAP Software is a user-friendly system with complex testing capabilities.

Easy to use - it is now possible to design, customize and maximize your testing procedures and final output with simple menus. Write custom scripts based from templates or from scratch.

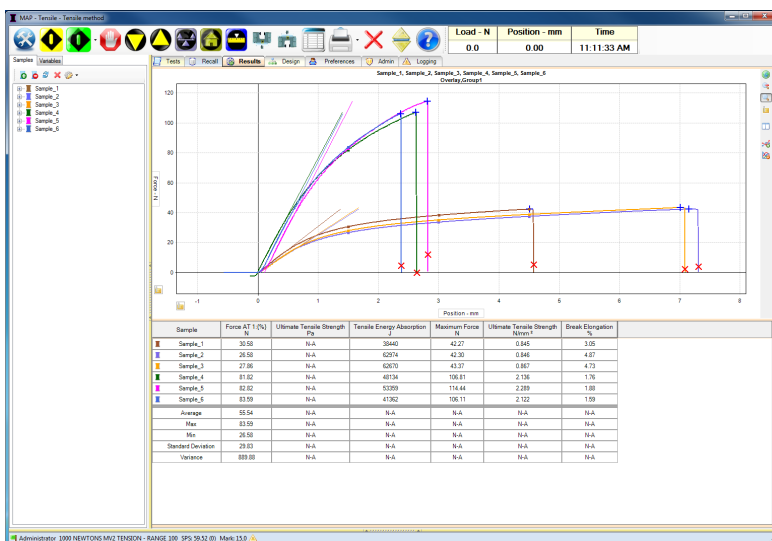
Thwing-Albert's MAP4 software comes equipped with preset standards available for use out of the box. The MAP4 software is compatible with the Vantage Series Tensile Testers working to multiply exponentially the possibilities and ease of testing.

Test methods are built-in to the program for various applications including tension, compression, peel, tear, friction, and with the ability to customize the potential is unlimited.

When it comes to flexibility and capability, MAP4 software is equipped to test a variety of materials including paper, plastic, rubber, textiles, medical devices, seals and foam.

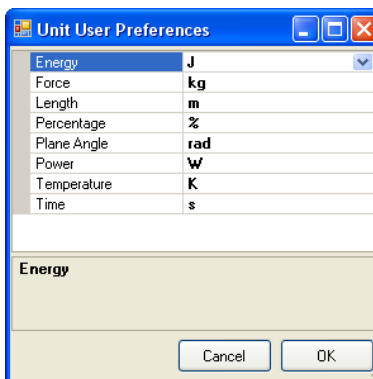


**Digital Control Panel**



### Real-time Graphical Display

Users see the Stress/Strain Curve as the test runs.



### Easy Unit Conversion

Simply select the desired unit conversions from the drop down menus to make changes to test criteria:

- Energy
- Force
- Power
- Time
- Length
- Plane Angle
- Temperature
- Percentage



**Custom Test Result Display**  
Users can customize the "Result" screen to view results based on their needs.



**Group Statistics**  
Group test results together using tracking variable so that you can see statistics on each group.



**Tracking Variables**  
Add "Tracking Variables" that let you track your results, search the database and group data on screen.



**Language Database**  
Administrators can add and edit the database for any language.



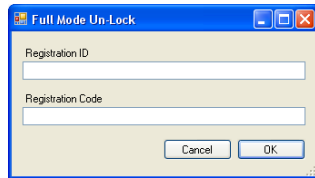
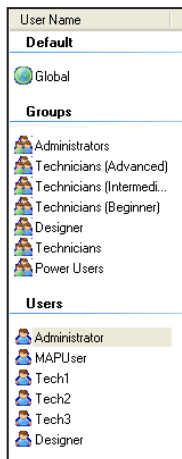
**Set Pass/Fail Conditions**  
Increase productivity by setting pass/fail conditions for testing methods to alert technicians when a test result is out of specification.



**SQL Database**  
Easily manipulate test results... they can be queried, recalled and exported to Excel for enhanced analysis.

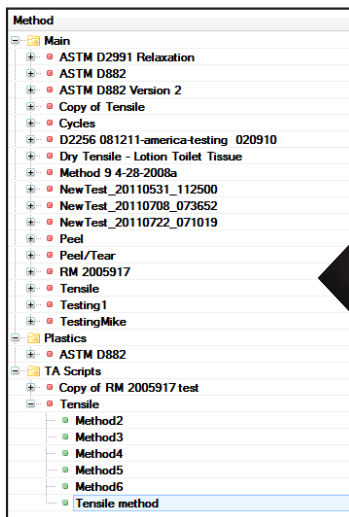


**Password Protection**  
Advanced users can setup user groups and individuals software privileges.



Label	Time	Operator	Description	Ultimate Tensile Strength-N/mm <sup>2</sup>	Peak Elong-%	Force AT
Tensile - Tensile method						
Sample_6	7/28/2011 10:29:38 AM	Administrator		2.122	1.579	83.588
Sample_5	7/28/2011 10:28:59 AM	Administrator		2.289	1.874	82.825
Sample_4	7/28/2011 10:28:12 AM	Administrator		2.136	1.746	81.818
Sample_3	7/28/2011 10:22:49 AM	Administrator		0.867	4.675	27.863
Sample_2	7/28/2011 10:21:49 AM	Administrator		0.846	4.771	26.501
Sample_1	7/28/2011 10:20:57 AM	Administrator		0.845	3.008	30.579

## Built-In Library of Standards...Endless Possibilities

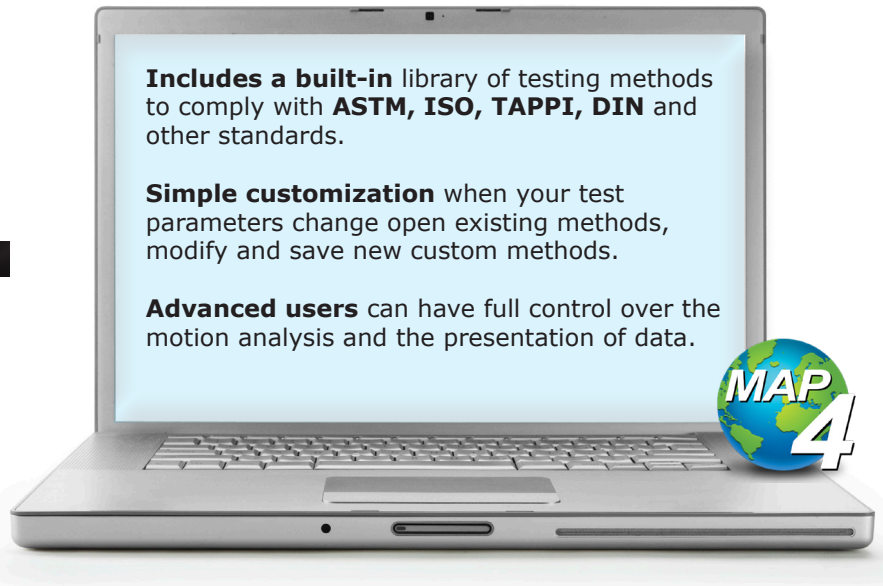


Sample List of Built-In Test Methods

**Includes a built-in** library of testing methods to comply with **ASTM, ISO, TAPPI, DIN** and other standards.

**Simple customization** when your test parameters change open existing methods, modify and save new custom methods.

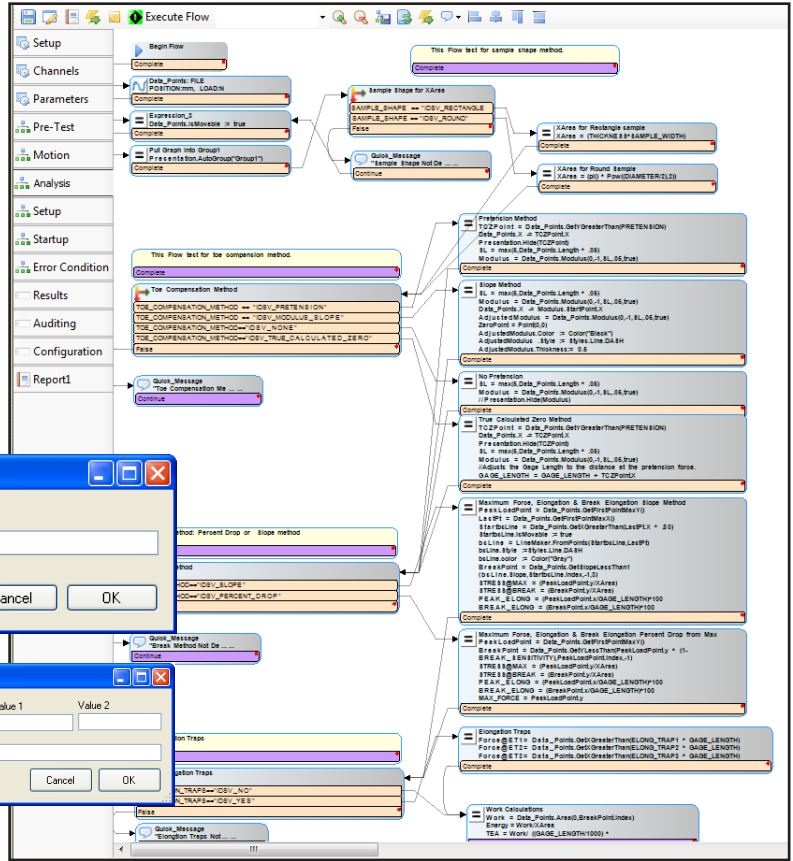
**Advanced users** can have full control over the motion analysis and the presentation of data.



## User Customizable Methods

### Template Creation

Administrators and users with software privileges can design and build complex scripts that control the every aspect of the test method.



### System Requirements

- ✓ Operating System: Windows® 10
- ✓ Microsoft .NET Framework 4.5
- ✓ Processor: 2 GHz or faster processor
- ✓ RAM: 8 GB
- ✓ Hard Disk Size: 500 GB
- ✓ 2 USB ports
- ✓ Video: 1920 x 1080 minimum

Includes FREE technical support for one year.

**Contact Thwing-Albert for a Demo**  
**856-767-1000 or info@thwingalbert.com**