

Circular Sample Cutters

Sample Preparation

Serving the testing industry for over a century, Thwing-Albert is committed to providing the best possible solution for any application.

This circular sample cutter quickly prepares samples used for determining basis weight of sheet materials including paper, textiles, and plastic films.

The sample is cut by simply turning the handle 90°. A locking mechanism ensures the safety of the operator.

Specifications

- **Model 175B** = 100 cm²
Model PS50 = 50 cm²
Model PS10 = 10 cm²
- Sample Sizes Available (cm²):
100 (standard), 10, or 50
- Cutting Depth: 5 mm maximum
- Cutting Accuracy: ±0.5 mm
- Dimensions: 17 x 17 x 15 cm
- Net Weight: 2 kg
- Standards:
ASTM D3776, ASTM D2646, ISO 3801,
BS 3424, BS 2471, BS EN 12127

Specifications subject to change without notice.



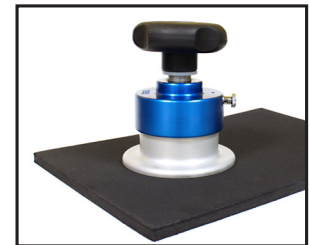
Model 175B
Cutting Area
100 cm²



Model PS50
Cutting Area
50 cm²



Model PS10
Cutting Area
10 cm²



The Circular Sample Cutter provides samples for determining basis weight.

FEATURES

- Available sizes include
100, 10 or 50 cm²
- Easy, accurate sample preparation
- Ergonomic operation
- Safety locking mechanism
- Cutting pad provided



Thwing-Albert
Instrument Company



TA060622

thwingalbert.com