

14 Collings Avenue, West Berlin, NJ 08091

TA240g Vise Grip

 Opening: 0 - 24mm (depending on jaws)
 Weight: 1.30 kg each grip (without jaws)

TA240g-S50 Vise Grip

 . Opening: 0 - 50mm (depending on jaws)
 . Weight: 1.30 kg each grip (without jaws)

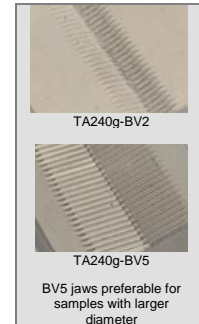
TA240g-S100 Vise Grip

 •Opening: 10 – 100mm (depending on jaws)
 •Weight: 2.22kg each grip (without jaws)

- Tensile force: 5 kN
- Temperature range: 0°C - +180°C
Other temperature ranges possible on request
- Body: Aluminum, anodized
- Scope of delivery: 1 pair (without jaws)
- Also as pneumatic grip available
(see data sheet TA240g+Ko)

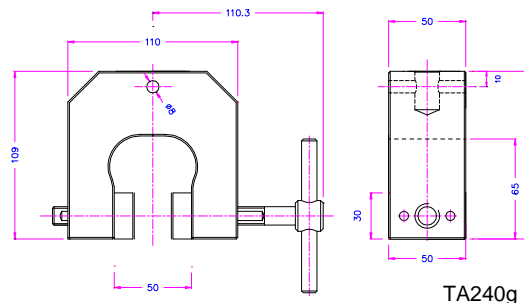

Jaws for TA240g: Scope of delivery 1 set = 4 jaws



Item No.	Surface	Clamping surface H x W	Opening TA240g	Opening TA240g-S50	Opening TA240g-S100	Weight per pair
TA240g-B	Blank jaws	30x50mm	0-30mm	0-50mm	-	0.22kg
TA240g-BG	Rubber jaws	30x50mm	0-28mm	0-50mm	-	0.22kg
TA240g-BP	Pyramid jaws	30x50mm	0-30mm	0-50mm	-	0.21kg
TA240g-BV2	V-jaws	30x50mm	Ø 2-30mm	Ø 2-50mm	-	0.22kg
TA240g-BV5	V-jaws	30x50mm	Ø 5-30mm	Ø 5-50mm	-	0.25kg
TA240g-BW	Wave jaws	30x50mm	0-30mm	0-50mm	-	0.20kg
TA240g-BD	Diamond jaws	30x50mm	0-30mm	0-50mm	-	0.22kg
TA240g-B80	Blank jaws	30x80mm	0-26mm	0-48mm	10-100mm	0.43kg
TA240g-BG80	Rubber jaws	30x80mm	0-24mm	0-46mm	8-98mm	0.44kg
TA240g-BP80	Pyramid jaws	30x80mm	0-26mm	0-48mm	10-100mm	0.42kg
TA240g-BW80	Wave jaws	30x80mm	0-26mm	0-48mm	10-100mm	0.39kg
TA240g-BD80	Diamond jaws	30x80mm	0-26mm	0-48mm	10-100mm	0.43kg
TA240g-B100	Blank jaws	30x100mm	0-26mm	0-48mm	10-100mm	0.54kg
TA240g-BG100	Rubber jaws	30x100mm	0-24mm	0-46mm	8-98mm	0.55kg
TA240g-BP100	Pyramid jaws	30x100mm	0-26mm	0-48mm	10-100mm	0.53kg
TA240g-BW100	Wave jaws	30x100mm	0-26mm	0-48mm	10-100mm	0.51kg
TA240g-BD100	Diamond jaws	30x100mm	0-26mm	0-48mm	10-100mm	0.54kg


Inset jaws for TA240g: Scope of delivery 1 set = 4 jaws

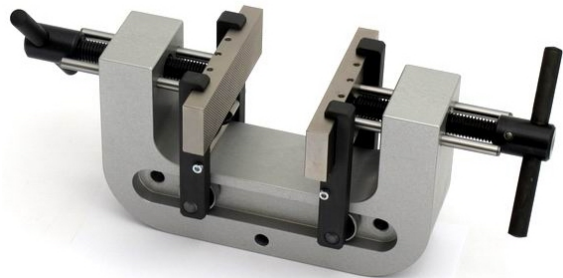
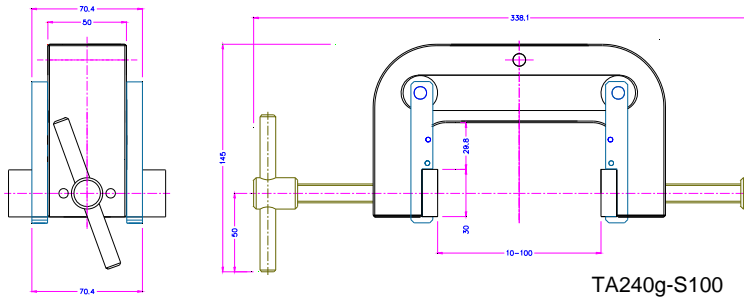
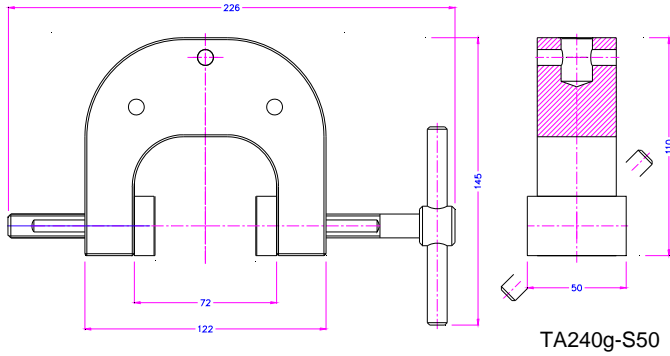
Quick change system - inset jaws require carriers (TA240g-GT)

Item No.	Surface	Clamping surface H x W	Opening TA240g	Opening TA240g-S50	Weight per pair
TA240g-GT	Carrier	-	-	-	0.18kg
TA240g-EB	Blank inset jaws	30 x 50mm	0 - 20mm	0 - 30mm	0.14kg
TA240g-EBG	Rubber inset jaws	30 x 50mm	0 - 18mm	0 - 30mm	0.14kg
TA240g-EBP	Pyramid inset jaws	30 x 50mm	0 - 20mm	0 - 30mm	0.13kg
TA240g-EBD	Diamond inset jaws	30 x 50mm	0 - 20mm	0 - 30mm	0.14kg



Blank jaws - Applicable for own further treatments - Steel blanks without coating	
Rubber jaws - 1mm rubber coating (NBR) - Nickel plated	
Pyramid jaws - Pyramids 1,2x45° - Hardened steel 58 HRC - Nickel plated	
V-jaws - For all kinds of round samples - Tooth pitch 1.2 mm - Hardened steel 58HRC - Nickel plated	
Wave jaws - For flexible materials - Wave 5 mm - Hardened steel 58HRC - Nickel plated	
Diamond jaws - Clamping surface coated with synthetic diamonds - Nickel plated	

14 Collings Avenue, West Berlin, NJ 08091



Examples of special construction designs



Pneumatic versions (see data sheet TA240g+ko)

