



**Thwing-Albert
Instrument Company**

More Than a Century of Testing Solutions

Serving the testing industry for over a century, Thwing-Albert is committed to providing the best possible solution for any application.

This circular sample cutter quickly prepares samples of 10 cm² used for determining basis weight of sheet materials including paper, textiles, and plastic films.

The sample is cut by simply turning the handle 90°. A locking mechanism ensures the safety of the operator.

Specifications

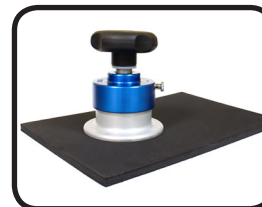
- **Model PS10** = 10 cm²
- Cutting Depth: 5 mm maximum
- Cutting Accuracy: ±0.5 mm
- Net Weight: .9 kg
- Standards:
ASTM D3776, ASTM D2646, ISO 3801,
BS 3424, BS 2471, BS EN 12127

Specifications subject to change without notice.

Circular Cutter Model PS10



Model PS10 [Cutting Area: 10 cm²]



The Circular Sample Cutter provides samples for determining basis weight.

Features

- Available sizes include:
100 (standard), 10 or 50 cm²
- Easy, accurate sample preparation
- Ergonomic operation
- Safety locking mechanism

Thwing-Albert Instrument Company

14 W. Collings Avenue, West Berlin, NJ 08091, USA

tel 856-767-1000 ■ fax 856-767-2615 ■ info@thwingalbert.com

www.thwingalbert.com



**An ISO 9001
Registered Company**