



**Thwing-Albert
Instrument Company**

More Than a Century of Testing Solutions

EJA Vantage Touch Screen Instrument Controller



Nexus® Tablet

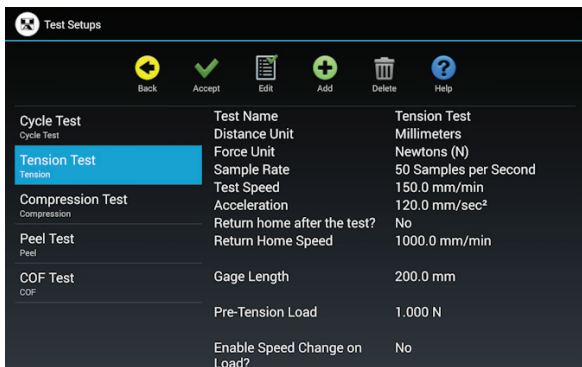
You choose the option to control the EJA Vantage using a touch screen tablet that is connected to a built-in Bluetooth system. Run basic test functions with the touch of your fingertips.

- Designed for **quick and easy testing**
- **NO PC needed** to run tests
- Minimal operator training required
- Ready to test:
Tensile, Peel, Compression, COF
- Easily modify test parameters
- Automatic load cell recognition
- Bluetooth communication
- Network printer support

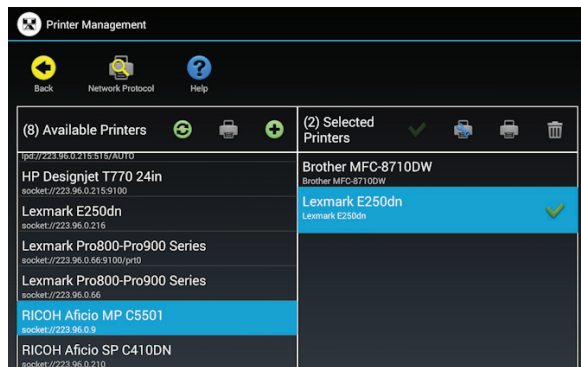
Simplified Testing at your Fingertips.



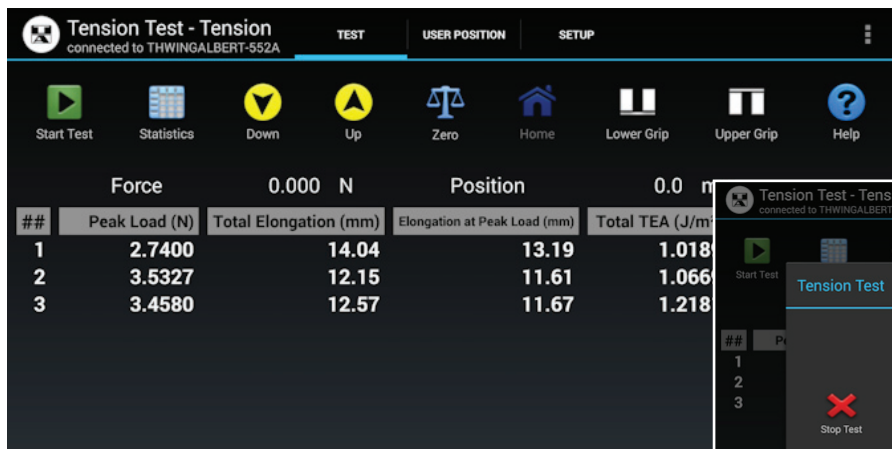
The touch screen instrument controller provides a simple, stand-alone version of the EJA Vantage Series Universal Testing Machine. Now there is a simplified way to run tensile tests, peel tests, compression tests, and COF tests without the need for a computer. Using a touch screen tablet that is connected to a built-in Bluetooth system, technicians can run basic test functions with the touch of their fingertips.



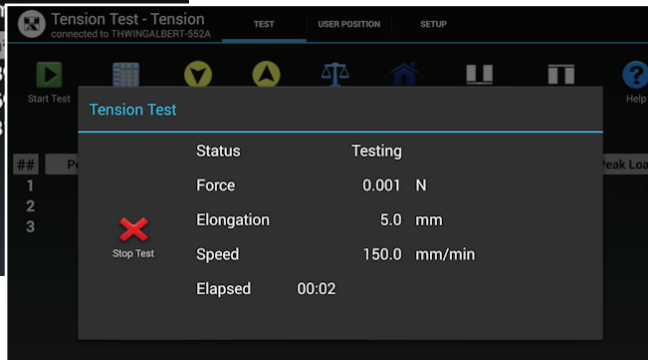
▲ Select a test to perform and adjust settings.



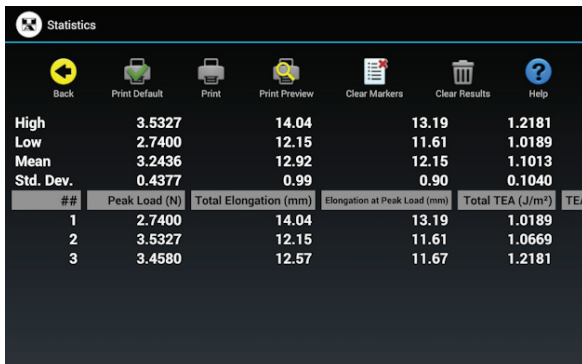
▲ Connect to a network printer via WiFi.



▼ Once a test starts, real-time test information and a stop test button will be displayed.



▲ Move the crosshead position and grips from the main screen. View recent test results and access statistics.



▲ Review statistics and generate printable reports.



▲ Reports can be printed via WiFi-connected network printer.

Thwing-Albert Instrument Company
 14 W. Collings Avenue, West Berlin, NJ 08091, USA
 tel 856-767-1000 ■ fax 856-767-2615 ■ info@thwingalbert.com

