



Thwing-Albert Instrument Company

More Than a Century of Testing Solutions

Automatic Sheet Former SF-RK

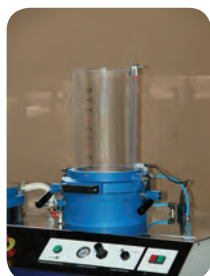
The SF-RK is an automatic sheet former used for the production of laboratory sheets in accordance to the Rapid Köthen method for measurement of the physical and/or optical properties of pulps.

This equipment became standard for quality control and for research and development due to its sturdiness, precision, reliability and high degree of repeatability.

Ergonomic controls with easy one push button for sheet making - filling, mixing, sedimenting and draining stages all controlled by built-in PLC. A pneumatic mixer, with integrated pressure regulator, in the stock container base ensures perfect mixing of pulp suspension and homogeneity of sheets.



▲ SF-RK Rapid Köthen Method



Two standard dryers enables production of up to 30 dry sheets per hour, depending on grammage, type of pulp & additives used. Individual ergonomic controls for each dryer including ON/OFF switch, vacuum meter and adjustable analog countdown timer with audible end alarm.

An elegant design and solid construction includes a large polished stainless steel operating table, a welded steel structure and resistant plastic cover panels. All parts in contact with water and pulp are made of corrosion resistant materials.

Produces and dries large circular laboratory sheets:

315 cm / Ø 200 mm

Plexiglas stock container with adjustable filling level:

10 L

High efficiency pneumatic vacuum generator:

96 kPa

Hot water circuit for dryers (closed loop): 93° C

Cold water circuit for dryers (closed loop): 20° C

Specifications

- Power Supply:
220 VCA, single phase,
50 or 60 Hz, 4000 W
- Dimensions (W x L x H):
1000 x 1700 x 1600 mm
- Weight: 470 kg
- Industry Standards:
ISO 5269/2 & ISO 5269/3

Thwing-Albert Instrument Company

14 W. Collings Avenue, West Berlin, NJ 08091, USA

tel 856-767-1000 ■ fax 856-767-2615 ■ info@thwingalbert.com

www.thwingalbert.com



*An ISO 9001
Registered Company*