

Score Quality Fixture

TAPPI T829

Use this fixture to measure score quality of corrugated containers according to TAPPI T829 when attached to the 1270 PCA Score Bend Tester or the Vantage Series Universal Testing Machine.

The score quality test evaluates the relative quality of scores in paperboard, corrugated containers, and plastics.

Fixture Consists of two parts:

1. Upper Grip Adapter = Pressure Bar
2. Lower Grip Adapter = U-Channel Wall

When testing the sample is positioned centered under the pressure bar and over the u-channel opening. The results will determine the score break force for a scored and unscored section of the sample material. These results are used to calculate a score ratio and determine a pass or fail range of the material tested.

Dimensions

■ Upper Grip Adapter

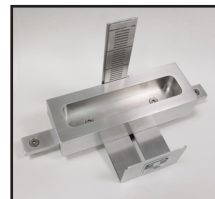
Weight: 135 g (202-3010 & 750-3105)

■ Lower Grip Adapter

Internal width of 27mm (1.063 in)

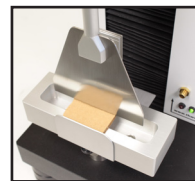
Weight: 665 g (202-3010 / 620 g (1750-3105)

Meets Industry Standard TAPPI T829



▲ Score Bend Fixture
Part #202-3010

▼ Vantage Fixture
Part #1750-3105



Thwing-Albert
Instrument Company



TA021722

thwingalbert.com